

Roku HD1000 Helpful Tips

For customers who want to share
files from Windows 98



ROKU™

Revision 1.0 | October 29, 2003

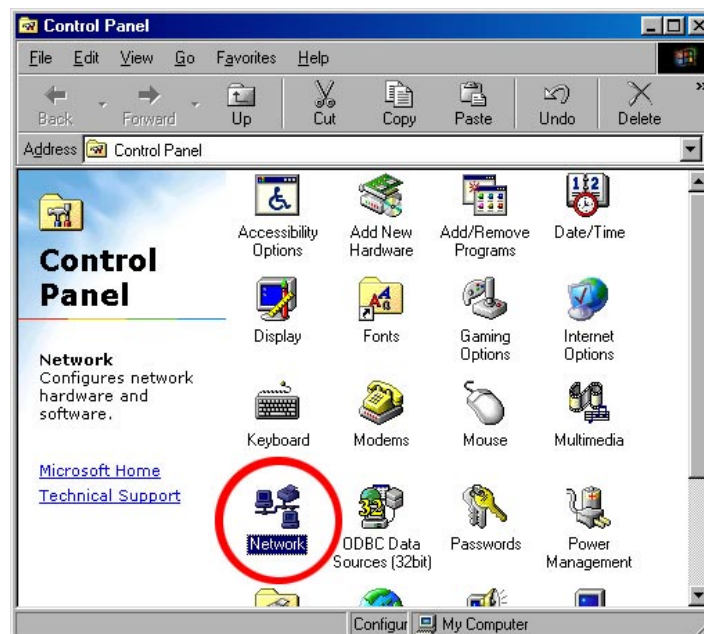
Sharing Files from Windows 98 to the Roku HD1000

In order for your HD1000 to access files on your computer, those files must be shared via the Windows File Sharing protocol. This document outlines the steps required to share files on a Windows 98 computer using this method. The steps should be similar for Windows ME.

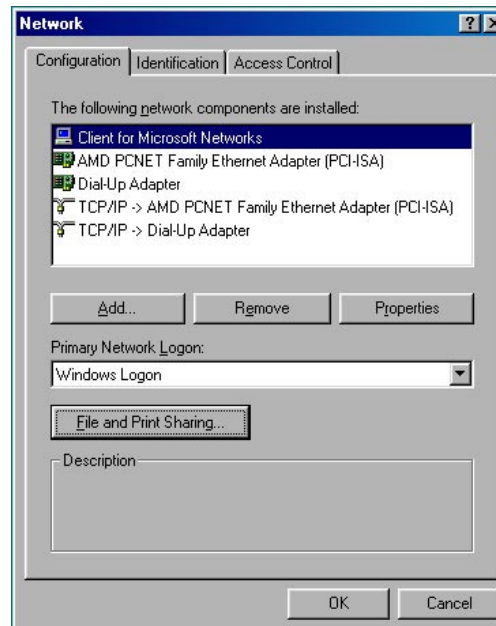
Step 1: Enable Windows File Sharing if it is not already enabled.

In order to share directories, you must first enable Windows File Sharing if it is not already enabled. If you are certain it is already enabled, proceed to Step 2, below.

Windows File Sharing is enabled via the Network Properties Window. The Network Properties Window can be accessed by right-clicking on *Network Neighborhood* and choosing "Properties" or by choosing "Network" from the Control Panel, as shown:



Both of these methods should result in the network properties dialog:



Choose “File and Print Sharing...” and you will be presented with the following window:



Ensure that at least the top box, “I want to be able to give others access to my files”, is checked. This will allow you to designate folders to be shared on the network to other computers and the Roku HD1000. Click “OK” to confirm your changes, and click “OK” on the Network properties window to save the changes.

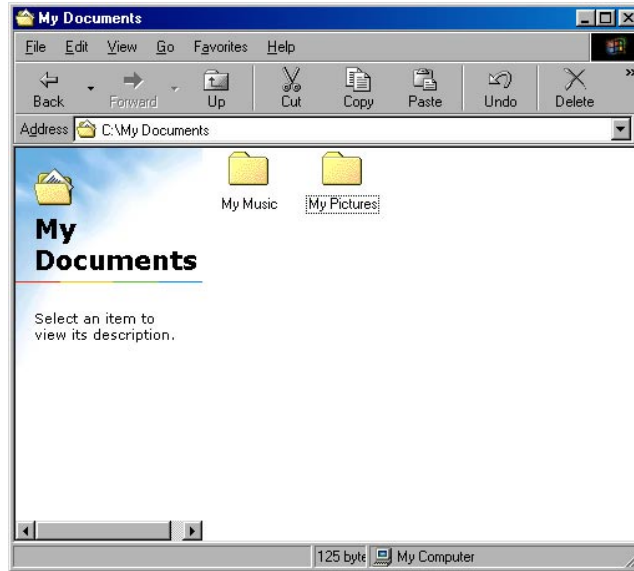
Note: At this point, Windows may require your installation CD in order to install files needed to allow file sharing.

Restart your computer if requested.

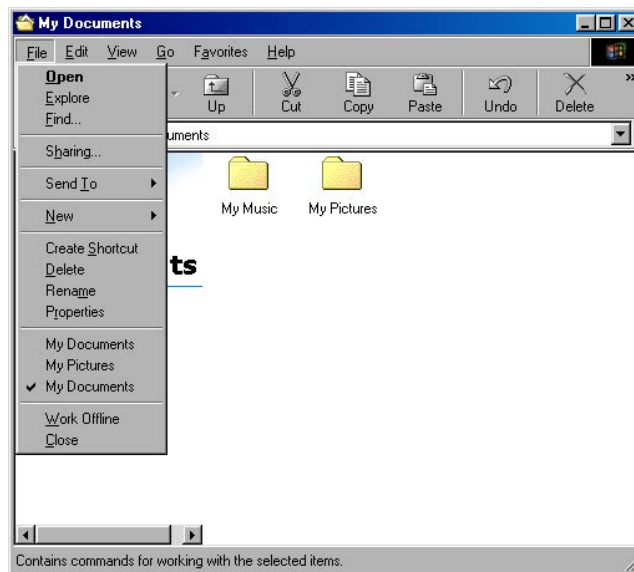
Step 2: Share Folders on the Network.

Now that file sharing is enabled, you can share individual folders to other computers on the network and to any Roku HD1000s you own.

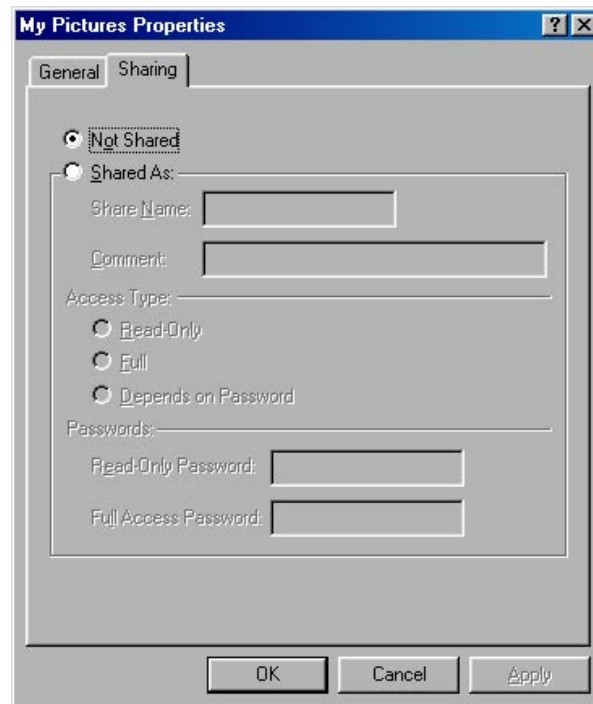
Start by first finding the folder that you want to share. For example “My Documents/My Pictures” :



Click on the directory and choose “Sharing” from the “File” menu:

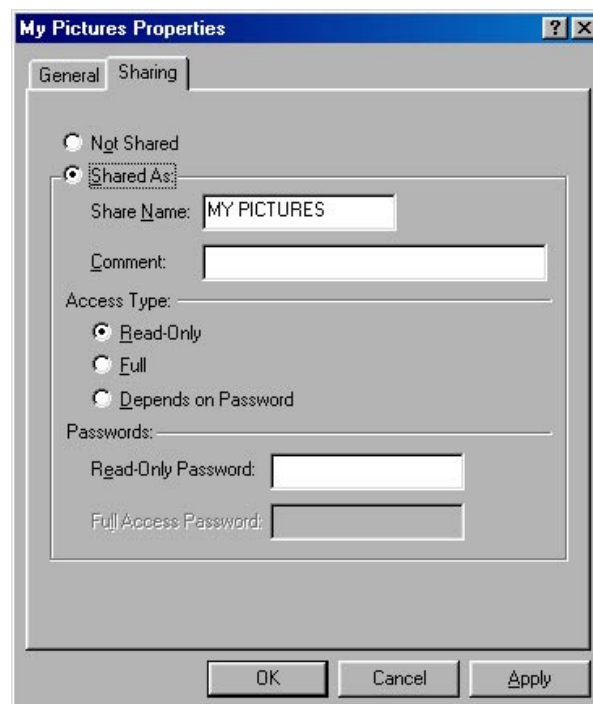


Choosing “Sharing” will result in a Properties dialog window being opened for the selected folder:

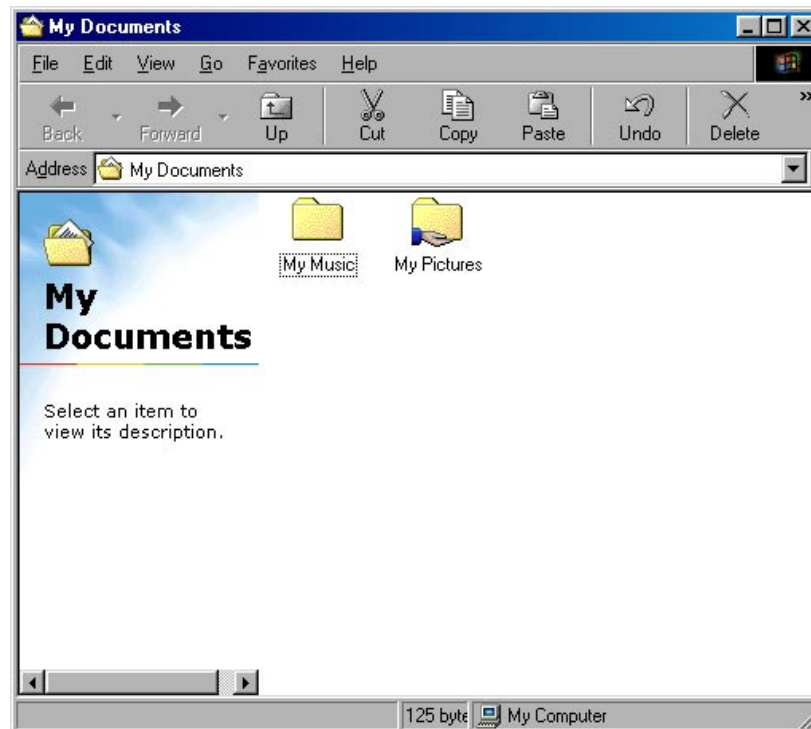


Click on “Shared As:” and optionally fill in the boxes for “Share Name” and “Comment”.

Note: Do not set a password on the share or your HD1000 will not be able to access the folder.



Click “OK” to confirm your changes. The folder should now appear different, indicating that it is shared:



“My Pictures” and all folders within it are now shared. Repeat this section for each folder you wish to share. Refer to the HD1000 user manual for information on how to access the newly-shared folders on the HD1000.

